



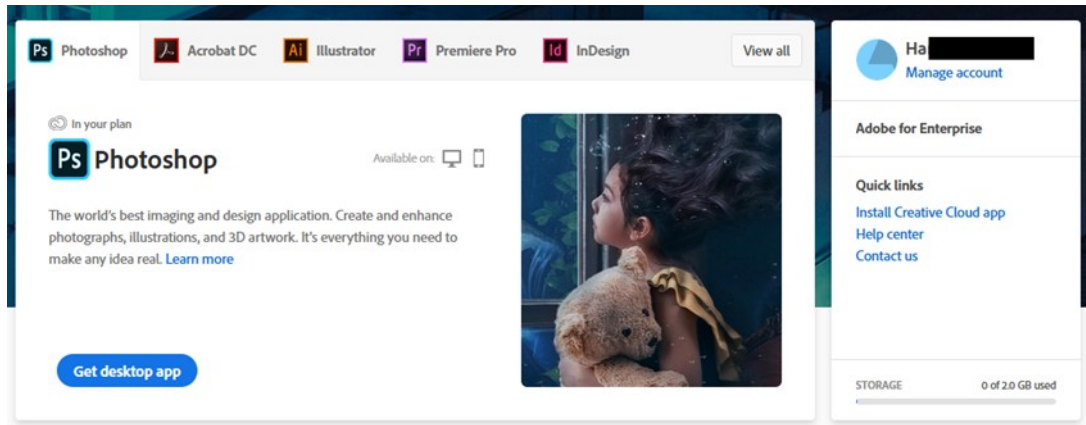
# How to guide: Accessing Adobe Creative Cloud from Home

Please remember to check to make sure your computer/laptop has the correct specification to run the Adobe software before downloading it.

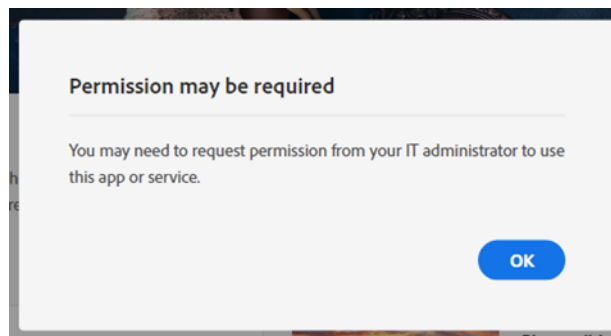
Photoshop example: <https://helpx.adobe.com/uk/photoshop/system-requirements.html>

Please follow the instructions below to enable access to Creative Cloud Desktop Apps on your personal device.

1. Visit <https://creativecloud.adobe.com> and sign in with your login details. These will be the following: student email address, which is the students username with @highamlaneschool.co.uk at the end for example Harryrush13@highamlaneschool.co.uk, The password is the students password used for the school computer system.
2. From the Creative Cloud website, browse for and download your desired app. Click **View all** on the top of the page to view all apps.



Please note if you get the following message – The message is not an error, it is an informative prompt which informs that to install these apps administrative rights will be required on the personal device.



For more information on how to download or install apps, see [Download and Install Creative Cloud apps](#).